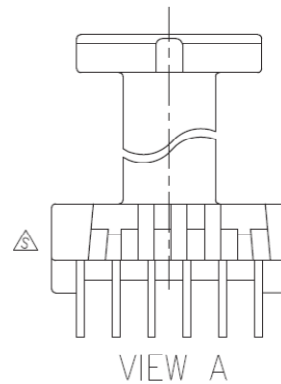
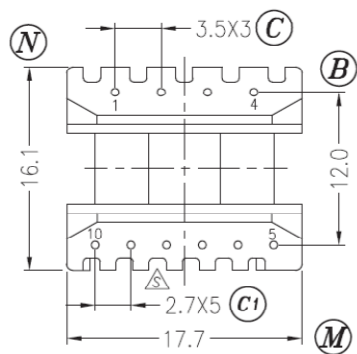
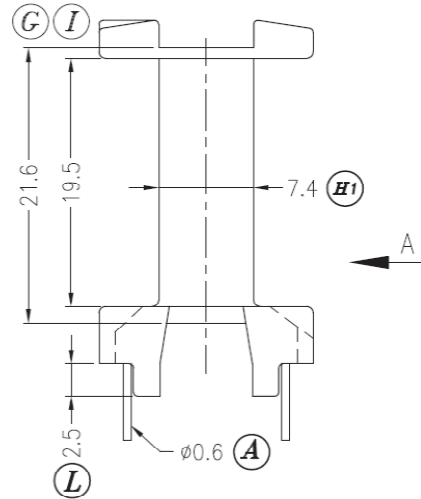
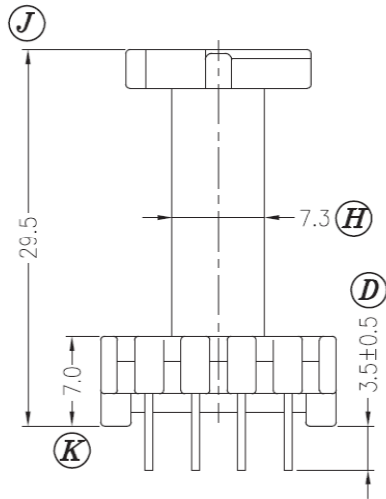
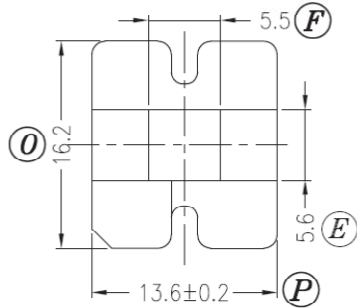
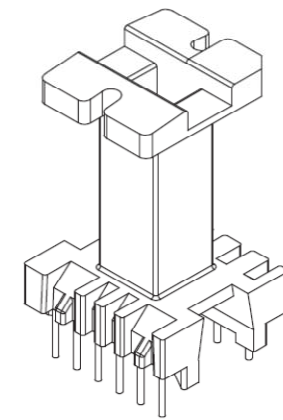


BE 19/27/5-1110CP-P-6x4

Revisions



Dimensions in mm

Country of Origin: China RoHS Certified: YES

Bobbin Material: Chang Chung Plastics T375J

Drawing Number: BE 19/27/5-1110CP-P-6x4

UL File: E59481 UL Rec: 94-V0 P-1915-1

Pin Material: Steel Wire (CP)

MH&W International Corp

Pin Tension: 1.5Kgm min

Finish: Tin

Phone 201-891-8800 Email: sales@mhw-intl.com

Part Number: BE 19/27/5-1110CP-P-6x4