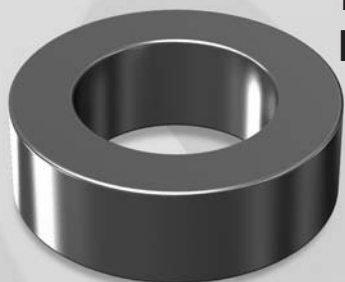


OD571

OD 57.15mm / 2.250inch



ID 26.39mm
HT 15.24mm

Core Dimensions

		OD(max)	ID(min)	HT(max)
Before coating	(mm)	57.15	26.39	15.24
	(inch)	2.250	1.039	0.600
After coating (parylene-C)	(mm)	58.00	25.60	16.10
	(inch)	2.285	1.007	0.635

Magnetic Dimensions

Cross Section (A)	Path Length (ℓ)	Window Area (Wa)	Volume (V)
2.29cm ²	12.5cm	5.14cm ²	28.6cm ³
0.355in ²	4.93in	1,014,049cmil	1.75in ³

Available Cores

MPP	Part No.			AL (nH/N ²)	Perm. (μ)
	High Flux	Sendust	Mega Flux®		
CM571026	CH571026	CS571026	CK571026	60	26
CM571060	CH571060	CS571060	CK571060	138	60
-	-	CS571075	CK571075	172	75
-	-	CS571090	CK571090	206	90
CM571125	CH571125	CS571125	-	287	125
CM571147	-	-	-	306	147
CM571160	-	-	-	333	160
-	-	-	-	-	173
-	-	-	-	-	200

Winding Information

AWG Wire No.	Single Layer Turn	AWG Wire No.	Single Layer Turn
10	26	19	78
11	30	20	88
12	34	21	99
13	39	22	111
14	43	23	124
15	49	24	138
16	55	25	156
17	62	26	174
18	70	27	193

Single layer winding with 1 inch leads

AL vs NI Curve (60μ, 125μ)

