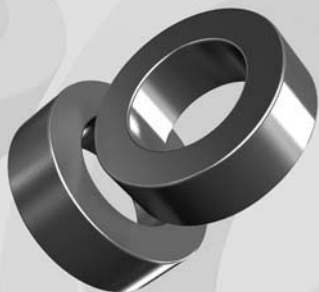


# OD 172

OD 17.27mm / 0.680inch



ID 9.65mm  
HT 6.35mm

## Core Dimensions

		OD(max)	ID(min)	HT(max)
Before coating	(mm)	17.27	9.65	6.35
	(inch)	0.680	0.380	0.250
After coating (parlylene-C)	(mm)	18.03	9.02	7.11
	(inch)	0.710	0.355	0.280

## Magnetic Dimensions

Cross Section (A)	Path Length (ℓ)	Window Area (Wa)	Volume (V)
0.232cm <sup>2</sup>	4.14cm	0.683cm <sup>2</sup>	0.9605cm <sup>3</sup>
0.0360in <sup>2</sup>	1.63in	126,000cmil	0.05868in <sup>3</sup>

## Available Cores

MPP	Part No.			AL (nH/N <sup>2</sup> )	Perm. (μ)
	High Flux	Sendust	Mega Flux®		
CM172026	CH172026	CS172026	CK172026	19	26
CM172060	CH172060	CS172060	CK172060	43	60
-	-	CS172075	CK172075	53	75
-	-	CS172090	CK172090	64	90
CM172125	CH172125	CS172125	-	89	125
CM172147	CH172147	-	-	105	147
CM172160	CH172160	-	-	114	160
CM172173	-	-	-	123	173
CM172200	-	-	-	142	200

## Winding Information

AWG Wire No.	Single Layer Turn	AWG Wire No.	Single Layer Turn
12	9	21	29
13	10	22	33
14	12	23	37
15	14	24	41
16	16	25	47
17	18	26	52
18	20	27	58
19	23	28	65
20	26	29	73

Single layer winding with 1 inch leads

## AL vs NI Curve (60μ, 125μ)

