

# EQ CORE

SPECIAL MAGNETIC POWDER CORE

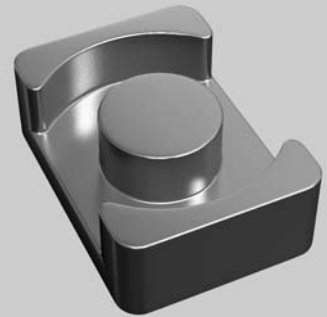


## Features

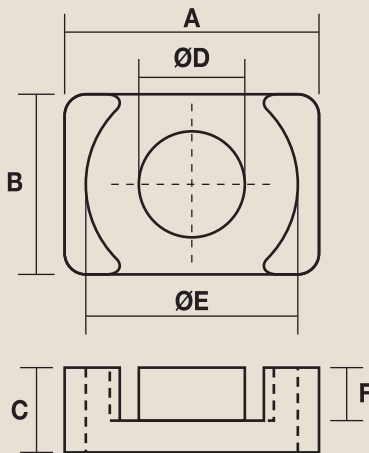
- Small dimensions for large current
- No magnetic flux leakage
- Excellent DC bias characteristics
- Good temperature stability
- Large energy storage capacity

## Applications

- Small dimension DC/DC converter
- Large current choke coil
- Smoothing choke coil
- CPU cores for lap-top computer



## Product Identification



### KEQ 41 28 A - 040

Permeability : 40 $\mu$	Available Perm : 26,40,60 $\mu$
Height of EQ core	
Width : 28mm	
Length : 40mm	Available size : 21mm~ 65mm
Mega Flux <sup>®</sup> EQ core	HEQ : High Flux, SEQ : Sendust

Part No.	Dimensions (mm)						Path Length (cm)	Cross Section Area(cm <sup>2</sup> )	AL value (nH/N <sup>2</sup> )		
	A	B	C	D	E	F			026 $\mu$	040 $\mu$	060 $\mu$
KEQ 2014A	20.5	14.0	8.1	8.8	18.0	5.7	4.52	0.608	44	68	101
KEQ 2014B	20.5	14.0	10.1	8.8	18.0	7.7	5.32	0.608	37	57	86
KEQ 2619A	26.5	19.0	10.1	12.0	22.6	6.8	5.47	1.198	72	110	165
KEQ 2619B	26.5	19.0	12.4	12.0	22.6	9.1	6.39	1.198	61	94	141
KEQ 3222A	32.0	22.0	10.3	13.5	27.6	6.6	6.03	1.523	83	127	190
KEQ 3222B	32.0	22.0	15.2	13.5	27.6	11.5	7.99	1.523	62	96	144
KEQ 3626A	36.0	26.0	17.4	14.4	32.0	13.4	9.47	1.808	62	96	144
KEQ 4128A	41.5	28.0	19.9	14.9	36.5	15.4	11.52	1.997	57	87	131
KEQ 5032A	50.0	32.0	25.0	20.0	44.0	19.5	13.34	3.141	77	118	178
KEQ 6542A	65.0	42.0	30.0	26.0	57.2	22.8	16.53	5.309	105	161	242

※ HEQ(High Flux EQ Core), SEQ(Sendust EQ core) and customer specifications are also available.