



Mn-Zn

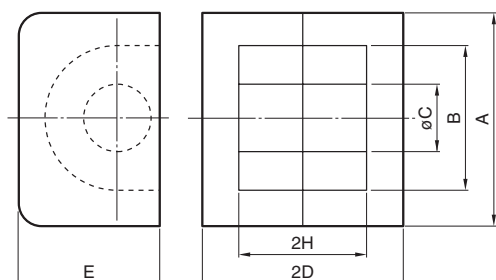
Ferrite Cores for Switching Power Supplies

EP series

Mn-Zn EP Core



SHAPES AND DIMENSIONS



PC47	EP7	Z	1	2
Material	Size of EP core	AL-value (Z: without air gap)	Type	Number of lead slot
			1 Without air gap	
			2 With air gap	

Part No.	Dimensions (mm)					
	A	B	øC	2D	E	2H
PC47EP7-Z	9.2±0.2	7.4±0.2	3.3±0.1	7.4±0.1	6.35±0.15	5.2±0.2
PC47EP10-Z	11.5±0.3	9.4±0.2	3.3±0.15	10.2±0.2	7.65±0.2	7.4±0.2
PC47EP13-Z	12.5±0.3	10.0±0.3	4.35±0.15	12.85±0.15	8.8±0.2	9.2±0.2
PC47EP17-Z	18.0±0.4	12.0±0.4	5.68±0.18	16.8±0.2	11.0±0.25	11.3±0.3
PC47EP20-Z	24.0±0.5	16.5±0.4	8.75±0.25	21.4±0.2	14.95±0.35	14.3±0.3

Part No.	Effective parameter					Electrical characteristics		
	Core factor C_1 (mm ⁻¹)	Effective cross-sectional area A_e (mm ²)	Effective magnetic path length ℓ_e (mm)	Effective core volume V_e (mm ³)	Weight (g)	AL-value (nH/N ²) 1kHz 0.5mA 100Ts Without air gap With air gap		Core loss (W) max. 100kHz 200mT 100°C
PC47EP7-Z	1.52	10.3	15.7	162	1.4	830 min.	63±3% 100±4%	0.058
PC47EP10-Z	1.70	11.3	19.2	217	2.8	800 min. 800±25%	63±3% 100±4%	0.071
PC47EP13-Z	1.24	19.5	24.2	472	5.1	1170 min. 1100±25%	100±3% 160±3%	0.155
PC47EP17-Z	0.84	33.9	28.5	966	12	1840 min.	100±5% 250±7%	0.306
PC47EP20-Z	0.508	78	39.8	3120	28	3200 min.	100±5% 250±7%	1.027

• All specifications are subject to change without notice.