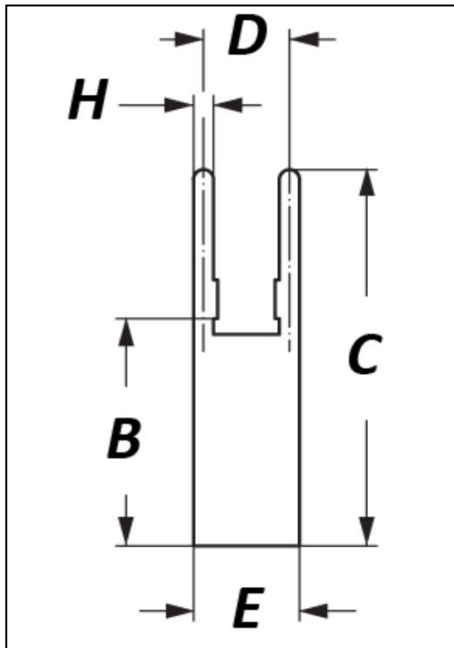
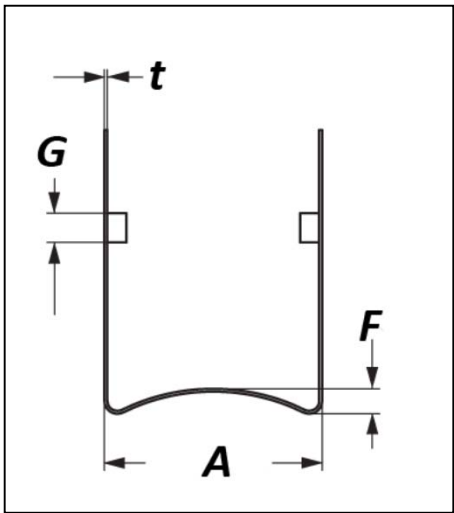


FPQ26/25-CM



| Dimension | | | | |
|-----------|------|----|---|------------|
| A | 28.2 | mm | | <i>max</i> |
| | 1.11 | in | | |
| B | 25.4 | mm | ± | 0.25 |
| | 1.00 | in | ± | 0.01 |
| C | 36.8 | mm | ± | 0.5 |
| | 1.45 | in | ± | 0.02 |
| D | 9.0 | mm | | <i>ref</i> |
| | 0.35 | in | | |
| E | 10.5 | mm | | <i>ref</i> |
| | 0.41 | in | | |
| F | 1.7 | mm | | <i>ref</i> |
| | 0.07 | in | | |
| G | 3.0 | mm | | <i>ref</i> |
| | 0.12 | in | | |
| H | 1.5 | mm | | <i>ref</i> |
| | 0.06 | in | | |
| t | 0.4 | mm | | <i>ref</i> |
| | 0.02 | in | | |

Material: Phospher Bronze

Plating: Sn

RoHS Compliant: YES

Country of Origin: Taiwan



Distributed By:

MH&W International Corp

14 Leighton Place, Mahwah, NJ 07430

Phone: 201-891-8800 - Toll Free: 866-MHW-CORE

Email: sales@mhw-intl.com WEB: www.mhw-intl.com