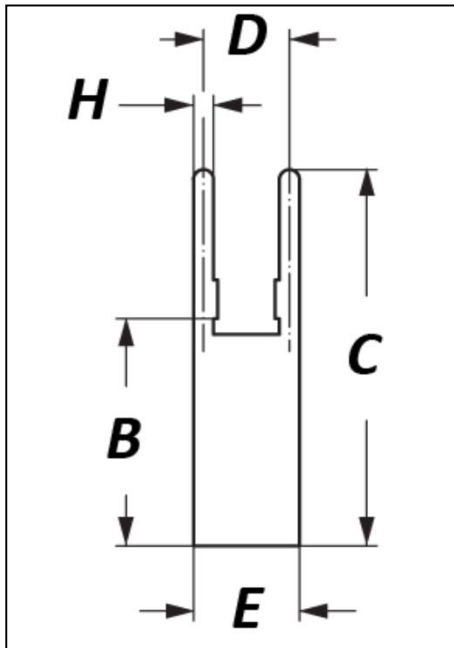
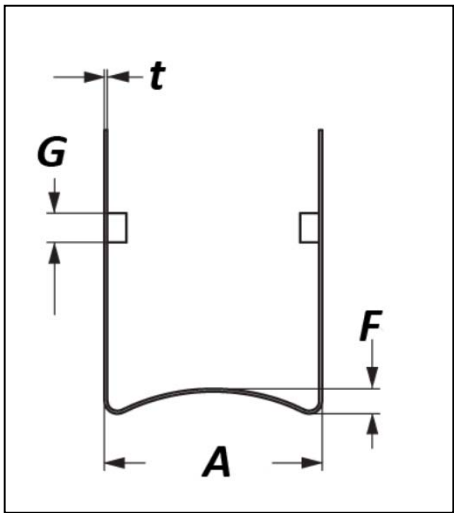


FPQ20/16-CM



Dimension				
A	22.2	mm		<i>max</i>
	0.87	in		
B	17	mm		<i>ref</i>
	0.67	in		
C	28.5	mm	±	0.5
	1.12	in	±	0.02
D	6.4	mm		<i>ref</i>
	0.25	in		
E	7.9	mm		<i>ref</i>
	0.31	in		
F	1.6	mm		<i>ref</i>
	0.06	in		
G	3.0	mm		<i>ref</i>
	0.12	in		
H	1.5	mm		<i>ref</i>
	0.06	in		
t	0.3	mm		<i>ref</i>
	0.01	in		

Material: Phospher Bronze

Plating: Sn

RoHS Compliant: YES

Country of Origin: Taiwan



Distributed By:

MH&W International Corp

14 Leighton Place, Mahwah, NJ 07430

Phone: 201-891-8800 - Toll Free: 866-MHW-CORE

Email: sales@mhw-intl.com WEB: www.mhw-intl.com