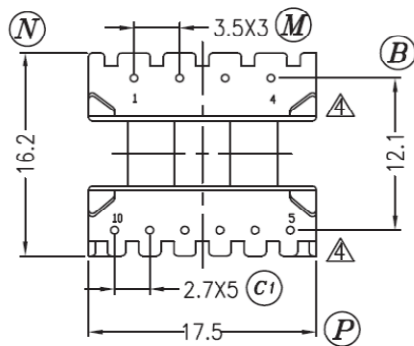
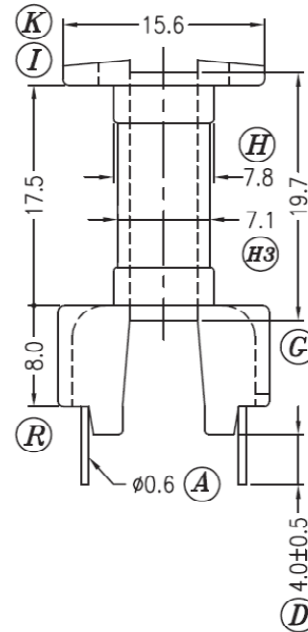
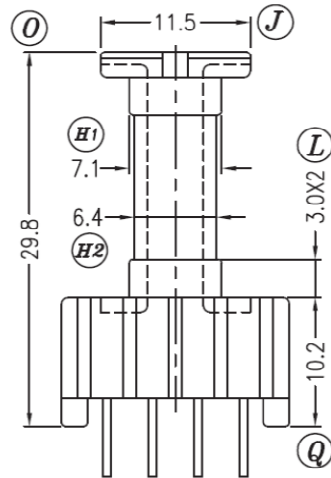
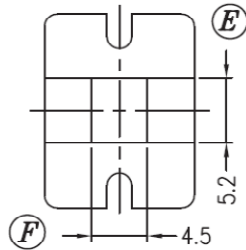


BE 16/24/5-1110CP-P-6x4

Revisions	



Dimensions in mm

Country of Origin: China	RoHS Certified: YES		
Bobbin Material: Chang Chung Plastics T375J		Drawing Number: BE 16/24/5-1110CP-P-6x4	
UL File: E59481	UL Rec: 94-V0	P-1604	Pin Material: Steel Wire (CP)
MH&W International Corp Phone 201-891-8800 Email: sales@mhw-intl.com		Pin Tension: 1.5Kgm min	Finish: e3 (JEDEC)
		Part Number: BE 16/24/5-1110CP-P-6x4	