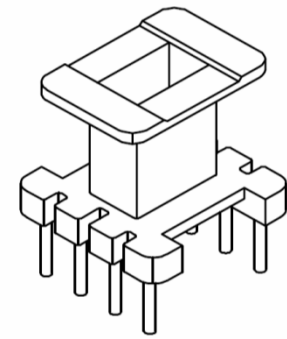
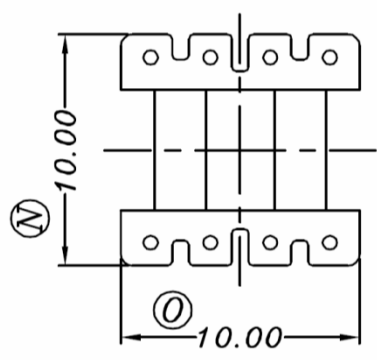
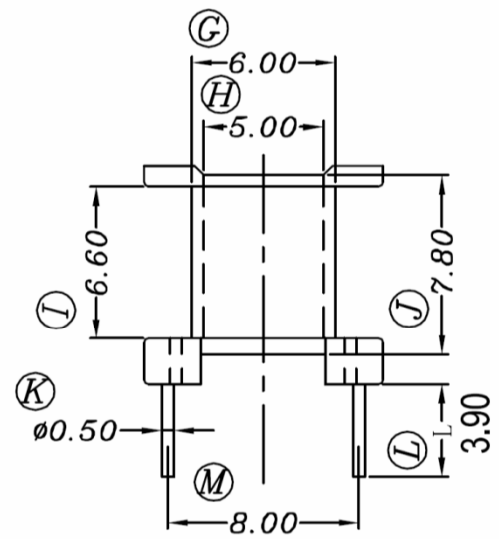
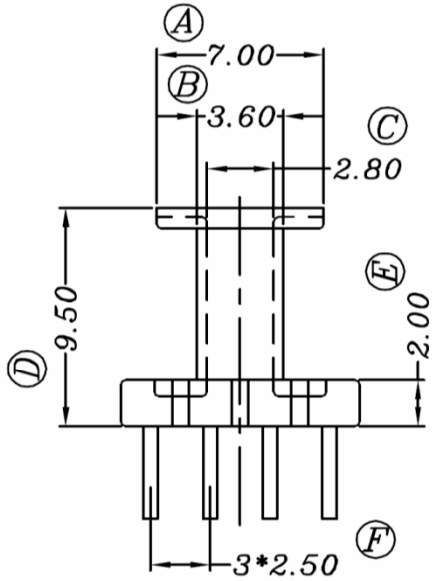


# BE 10-118CP-W-P3.9

Revisions	



Dimensions in mm

Country of Origin: China	RoHS Certified: YES	UL Molder Certification: E315110
Bobbin Material: Sumitomo PM9630	Drawing Number: BE 10-118CP-W-P3.9	
UL File: E41429	UL Rec: 94-V0	PY-1002A-W-P3.9
Pin Material: Steel Wire		Pin Tension: 1.0Kgm min
Pin Plating: CuSn (~2%Cu)		Part Number: BE 10-118CP-W-P3.9
<b>MH&amp;W International Corp</b> Phone 201-891-8800 Email: sales@mhw-intl.com		