

ELT20/5.7 (combination of ELH20/3.8 & Plate) Core Series

STD AL VALUE

STD ITEM DESCRIPTION	AL-VALUE
PC95ELT20/5.7 - Z	6270 ± 25%
PC95ELT20/5.7 - A1620	1620 ± 15%
PC33ELT20/5.7 - Z	3510 ± 25%
PC33ELT20/5.7 - A80	80 ± 3%
PC33ELT20/5.7 - A125	125 ± 3%
PC33ELT20/5.7 - A200	200 ± 5%

Note) ELH/PLT combination

8.2 g / pr

Core parameters

C_1 (mm ⁻¹)	0.384
l_e (mm)	21.8
A_e (mm ²)	56.7
V_e (mm ³)	1236
A_{min} (mm ²)	53.2
A_{cw} (mm ²)	11.6

ELH20/3.8 core (Fig.1)

Sym.	DIMENSIONS (mm)		
	SPEC.	Min.	Max.
A	20.00 ± 0.35	19.65	20.35
B	3.83 ± 0.10	3.73	3.93
C	16.0 ± 0.3	15.7	16.3
D	2.0 ± 0.1	1.9	2.1
E	16.67 ± 0.30	16.37	16.97
F1	5.06 ± 0.15	4.91	5.21
F2	11.63 ± 0.20	11.43	11.83
R2	0.5 typ.		

PLT20/1.8/16 core (Fig.2)

Sym.	DIMENSIONS (mm)		
	SPEC.	Min.	Max.
A	20.00 ± 0.35	19.65	20.35
B	1.83 ± 0.10	1.73	1.93
C	16.0 ± 0.3	15.7	16.3

Core Shape & Nomenclature

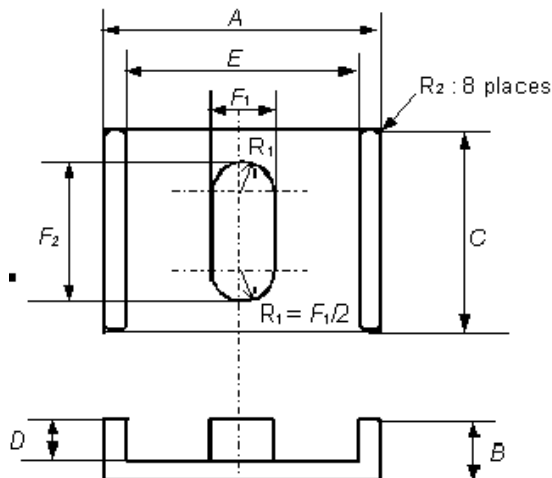


Fig.1 ELH core

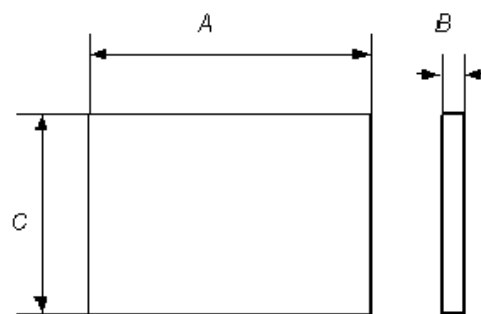


Fig.2 PLT core

TDK CORPORATION

MH&W International Corp, 14 Leighton Place, Mahwah, NJ 07430
 Toll Free: 866-MHW-CORE, Email: salesm@mhw-intl.com