

ELT13/4.4 (combination of ELH13/3.2 & Plate) Core Series

STD AL VALUE

| STD ITEM DESCRIPTION | AL-VALUE |
|----------------------|------------|
| PC95ELT13/4.4 - Z | 3160 ± 25% |
| PC95ELT13/4.4 - A720 | 720 ± 15% |
| PC95ELT13/4.4 - Z | 1890 ± 25% |
| PC95ELT13/4.4 - A63 | 63 ± 3% |
| PC95ELT13/4.4 - A100 | 100 ± 5% |
| PC95ELT13/4.4 - A160 | 160 ± 7% |

Note) ELH/PLT combination

2.8 g / pr

Core parameters

| | |
|------------------------------|-------|
| C_1 (mm ⁻¹) | 0.652 |
| l_e (mm) | 15.5 |
| A_e (mm ²) | 23.8 |
| V_e (mm ³) | 369 |
| A_{min} (mm ²) | 22.5 |
| A_{cw} (mm ²) | 15.1 |

ELH13/3.2 core (Fig.1)

| Sym. | DIMENSIONS (mm) | | |
|------|-----------------|-------|-------|
| | SPEC. | Min. | Max. |
| A | 13.00 ± 0.25 | 12.75 | 13.25 |
| B | 3.19 ± 0.1 | 3.09 | 3.29 |
| C | 10.4 ± 0.2 | 10.2 | 10.6 |
| D | 2.0 ± 0.1 | 1.9 | 2.1 |
| E | 10.83 ± 0.2 | 10.63 | 11.03 |
| F1 | 3.29 ± 0.1 | 3.19 | 3.39 |
| F2 | 7.56 ± 0.15 | 7.41 | 7.71 |
| R2 | 0.3 typ. | | |

PLT13/1.3/10.4 core (Fig.2)

| Sym. | DIMENSIONS (mm) | | |
|------|-----------------|-------|-------|
| | SPEC. | Min. | Max. |
| A | 13.00 ± 0.25 | 12.75 | 13.25 |
| B | 1.19 ± 0.05 | 1.14 | 1.24 |
| C | 10.4 ± 0.2 | 10.2 | 10.6 |

Core Shape & Nomenclature

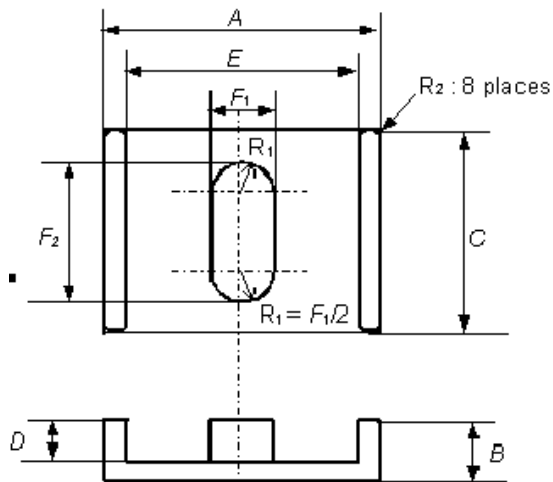


FIG.1 ELH CORE

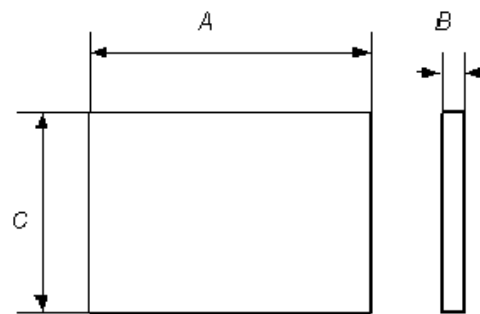


FIG.2 PLT CORE

TDK CORPORATION

MH&W International Corp, 14 Leighton Place, Mahwah, NJ 07430
Toll Free: 866-MHW-CORE, Email: salesm@mhw-intl.com