

Ferrite Cores

FT Series

For Common-Mode Filter
Square Closed-Magnetic Circuit Cores

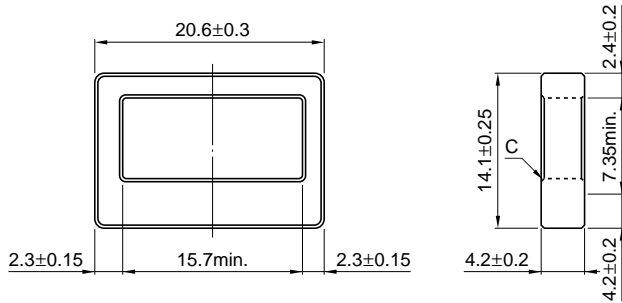
MATERIAL CHARACTERISTICS

Material			HS52	HS72	HS10
Initial permeability	μ		5500±25%	7500±25% [2000min., 500kHz]	10000±25%
Relative loss factor	$\tan\delta/\mu$	$\times 10^{-6}$	10[100kHz]	30[100kHz]	30[100kHz]
Saturation magnetic flux density*	Bs	mT[H=1194A/m]	410	410	380
Remanent flux density*	Br	mT	70	80	120
Coercive force*	Hc	A/m	6	6	5
Curie temperature*	Tc	°C min.	130	130	120
Electrical resistivity*	ρ_v	$\Omega\cdot m$	1	0.2	0.2
Density*	d_b	kg/m ³	4.9×10 ³	4.9×10 ³	4.9×10 ³

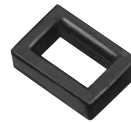
*Average value

• 1(mT)=10(G), 1(A/m)=0.012566(Oe)

SHAPES AND DIMENSIONS



Dimensions in mm



CHARACTERISTICS

Part No.	AL-value* (nH/N ²)	Ae (mm ²)	le (mm)
HS72FT20.6	2200+40, -30%	12.1	52.9
HS10FT20.6	2690±30%	12.1	52.9

*1kHz, 0.25A/m, 10Ts.