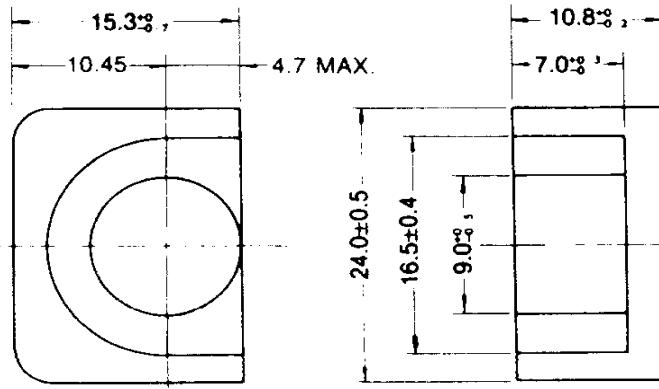


TDK EP Cores EP20

Based on JIS C 2516.



Dimensions in mm

Parameter

Parameter	Symbol	Unit	Value
Core factor	C_1	mm^{-1}	0.508
Effective magnetic path length	l_e	mm	39.8
Effective cross-section area	A_e	mm^2	78.0
Effective volume	V_e	mm^3	312
Cross-sectional center pole area	A_{cp}	mm^2	60.1
Minimum cross-sectional area	$A_{cp \text{ min.}}$	mm^2	56.7
Cross-sectional winding area of core	A_{cw}	mm^2	55.4
Weight (approx.)		g	27.6

Ordering Code	Al-Value (nH/N^2) min.	Effective Permeability (μ_e)
Without Air Gap		
H5AEP20-Z	4200	1698
H5C2EP20-Z	13500	5457
DN50EP20-Z	5900	
PC40EP20-Z	3200	1294
With Air Gap		
PC40EP20A100	100±5%	40
PC40EP20A250	250±7%	101

Measuring Conditions: N=100T, Frequency=1KHz, Level=0.5mA
H5C3/H5C4:100T, 10KHz, 10mV