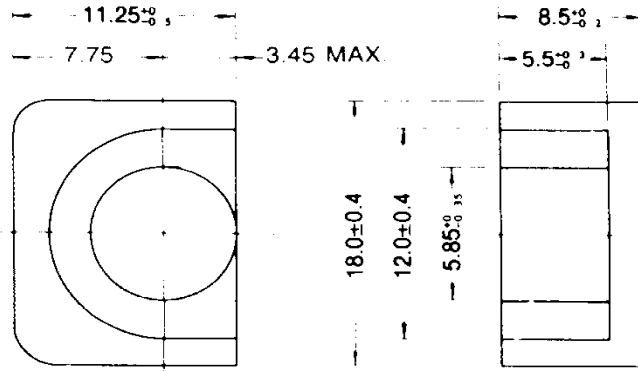


TDK EP Cores EP17

Based on JIS C 2516.



Dimensions in mm

Parameter

| | | | |
|---|-----------------------|------------------|-------|
| Core factor | C_1 | mm^{-1} | 0.841 |
| Effective magnetic path length | ℓ_e | mm | 28.5 |
| Effective cross-section area | A_e | mm^2 | 33.9 |
| Effective volume | V_e | mm^3 | 966 |
| Cross-sectional center pole area | A_{cp} | mm^2 | 25.3 |
| Minimum cross-sectional area | $A_{cp \text{ min.}}$ | mm^2 | 23.8 |
| Cross-sectional winding area of core | A_{cw} | mm^2 | 33.8 |
| Weight (approx.) | | g | 11.8 |

| Ordering Code | Al-Value (nH/N ²) min. | Effective Permeability (μ_e) |
|------------------------|---------------------------------------|---------------------------------------|
| Without Air Gap | | |
| H5AEP17-Z | 2500 | 1672 |
| H5C2EP17-Z | 8000 | 5350 |
| DN50EP17-Z | 3300 | |
| PC40EP17-Z | 1170 | 1155 |
| With Air Gap | | |
| PC40EP17A100 | 100±5% | 67 |
| PC40EP17A250 | 250±7% | 167 |

Measuring Conditions: N=100T, Frequency=1KHz, Level=0.5mA
H5C3/H5C4:100T, 10KHz, 10mV