

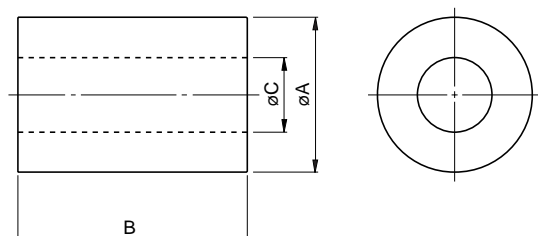
# Ferrite Cores

## Ferrite Bead Cores

### 1 Hole

## BB Series

### SHAPES AND DIMENSIONS/ELECTRICAL CHARACTERISTICS



Part No.	Dimensions (mm)			Impedance( $\Omega$ )[at 23°C]		
	$\varnothing A$	B	$\varnothing C$	10MHz typ.	100MHz typ.	100MHz min.
HF40BB1.7X1.9X0.7	1.7±0.15	1.9±0.15	0.7±0.1	5	33	23
HF70BB2.5X2.2X0.8	2.5±0.15	2.2±0.15	0.8±0.1	15	32	22
HF40BB3.5X1	3±0.15	5±0.2	1±0.1	11	64	45
HF70BB3.5X1	3±0.15	5±0.2	1±0.1	33	53	37
HF40BB3.4X3X1	3.4±0.15	3±0.15	1±0.1	7.6	46	32
HF70BB3.4X3X1	3.4±0.15	3±0.15	1±0.1	22	42	29
HF70BB3.4X6X1	3.4±0.15	6±0.3	1±0.1	44	71	50
HF70BB3.5X3X1.3	3.5±0.15	3±0.15	1.3±0.1	17	33	23
HF70BB3.5X5X0.8	3.5±0.15	5±0.2	0.8±0.1	40	68	48
HF40BB3.5X5X1.3	3.5±0.15	5±0.2	1.3±0.1	9.1	56	39
HF70BB3.5X5X1.3	3.5±0.15	5±0.2	1.3±0.1	29	49	34
HF70BB3.5X10X1.3	3.5±0.15	10±0.4	1.3±0.1	53	92	64
HF70BB4.5X5X1.6	4.5±0.15	5±0.2	1.6±0.1	31	53	37
HF70BB4X15X1.35	4±0.15	15±0.5	1.35±0.1	92	155	110
HF40BB4.5X5X1.6	4.5±0.15	5±0.2	1.6±0.1	11	64	45
HF40BB5X5X2	5±0.15	5±0.2	2±0.15	9.4	57	40
HF70BB5X5X2	5±0.15	5±0.2	2±0.15	27	47	33
HF70BB5.5X5X2.5	5.5±0.2	5±0.2	2.5±0.15	22	41	29
HF70BB6.4X5X3.2	6.4±0.2	5±0.2	3.2±0.15	21	38	27
HF40BB6X3.8X3	6±0.15	3.8±0.2	3±0.2	6	39	27
HF70BB6.4X10X3.2	6.4±0.2	10±0.4	3.2±0.2	40	77	54
HF70BB9X5X4.5	9±0.25	5±0.2	4.5±0.15	20	40	28
HF70BB9X10X4.5	9±0.25	10±0.4	4.5±0.2	42	74	52
HF70BB9.5X10.4X4.9	9.52±0.3	10.42±0.4	4.9±0.2	38	74	52
HF57BB2.5X5X0.8	2.5±0.15	5±0.2	0.8±0.1	28	70	50
HF57BB3.5X3X1.3	3.5±0.15	3±0.15	1.3±0.1	15	39	25
HF57BB3.5X4.5X0.8	3.5±0.15	4.5±0.2	1.3±0.1	34	83	55
HF57BB3.5X5X0.8	3.5±0.15	5±0.2	0.8±0.1	38	91	60
HF57BB3.5X5X1.3	3.5±0.15	5±0.2	1.3±0.1	25	62	40
HF57BB3.5X6X1	3.5±0.15	6±0.3	1±0.1	38	92	60
HF57BB3.5X10X1.3	3.5±0.15	10±0.4	1.3±0.1	47	115	80
HF57BB5X5X2	5±0.15	5±0.2	2±0.15	22	55	35
HF57BB5X7X2	5±0.15	7±0.3	2±0.15	30	73	50
HF57BB5X6X2.5	5±0.15	6±0.3	2±0.15	20	51	35
HF57BB6X3.8X3	6±0.15	3.8±0.2	3±0.2	13	34	25
HF57BB9X10X4.5	9±0.25	10±0.4	4.5±0.2	30	76	50
HF57BB9.5X10.4X4.9	9.52±0.3	10.42±0.4	4.9±0.2	32	81	50
HF57BB9.5X20X4.8	9.5±0.3	20±0.6	4.8±0.2	72	199	100

# Ferrite Cores

## Ferrite Bead Cores

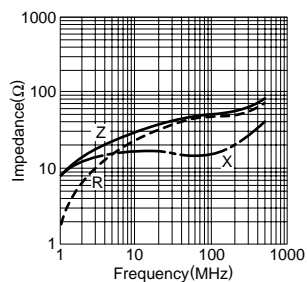
### 1 Hole

## BB Series

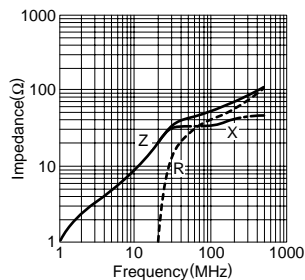
### TYPICAL ELECTRICAL CHARACTERISTICS

#### Z, R, X vs. FREQUENCY CHARACTERISTICS

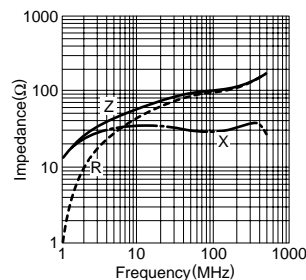
HF70BB3.5X5X1.3



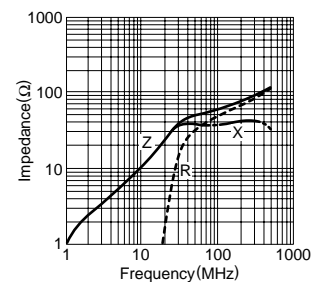
HF40BB3.5X5X1.3



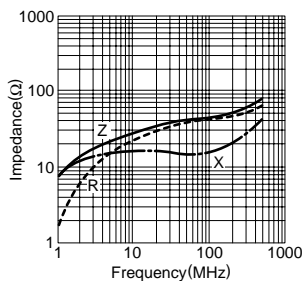
HF70BB3.5X10X1.3



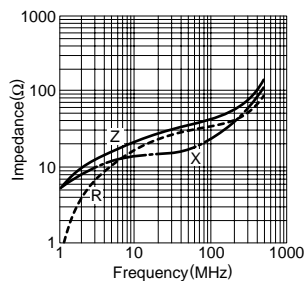
HF40BB4.5X5X1.6



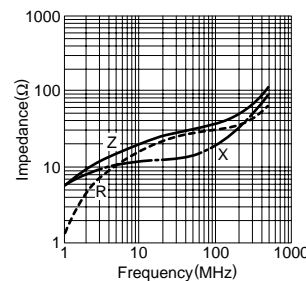
HF70BB5X5X2



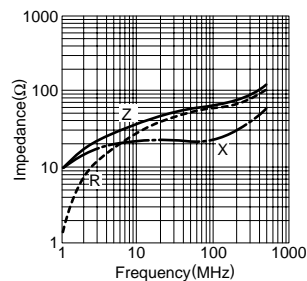
HF70BB3.4X3X1



HF70BB6.4X5X3.2



HF70BB6.4X10X3.2



HF70BB9.5X10.4X4.9

