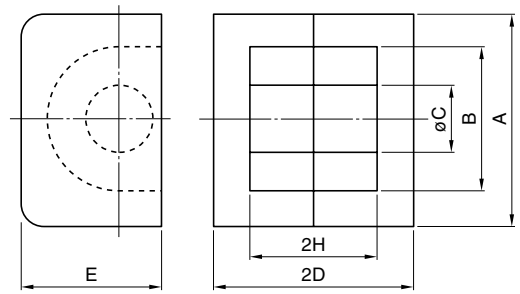
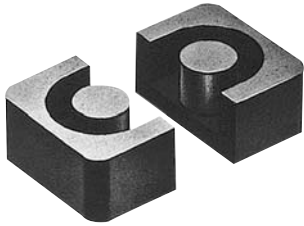


## EP CORES



Part No.	Dimensions in mm					
	A	B	øC	2D	E	2H
PC47EP7-Z	9.2±0.2	7.4±0.2	3.3±0.1	7.4±0.1	6.35±0.15	5.2±0.2
PC47EP10-Z	11.5±0.3	9.4±0.2	3.3±0.15	10.2±0.2	7.65±0.2	7.4±0.2
PC47EP13-Z	12.5±0.3	10.0±0.3	4.35±0.15	12.85±0.15	8.8±0.2	9.2±0.2
PC47EP17-Z	18.0±0.4	12.0±0.4	5.68±0.18	16.8±0.2	11.0±0.25	11.3±0.3
PC47EP20-Z	24.0±0.5	16.5±0.4	8.75±0.25	21.4±0.2	14.95±0.35	14.3±0.3

Part No.	Effective parameter				Electrical characteristics		Core loss (W) max. 100kHz, 200mT, 100°C	Weight (g)
	C <sub>1</sub> (mm <sup>-1</sup> )	A <sub>e</sub> (mm <sup>2</sup> )	ℓ <sub>e</sub> (mm)	V <sub>e</sub> (mm <sup>3</sup> )	AL-value (nH/N <sup>2</sup> )*			
					Without air gap	With air gap		
PC47EP7-Z	1.52	10.3	15.7	162	830 min.	63±3% 100±4%	0.058	1.4
PC47EP10-Z	1.70	11.3	19.2	217	800 min. 800±25%	63±3% 100±4%	0.071	2.8
PC47EP13-Z	1.24	19.5	24.2	472	1170 min. 1100±25%	100±3% 160±3%	0.155	5.1
PC47EP17-Z	0.84	33.9	28.5	966	1840 min.	100±5% 250±7%	0.306	12
PC47EP20-Z	0.508	78	39.8	3120	3200 min.	100±5% 250±7%	1.027	28

\* AL-value: 1kHz, 0.5mA, 100Ts