

OD 740

Core Dimensions

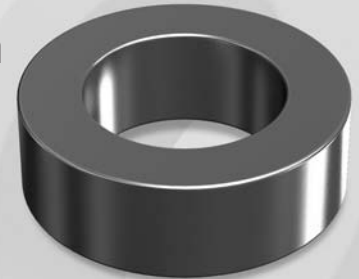
		OD(max)	ID(min)	HT(max)
Before coating	(mm)	74.1	45.3	35.0
	(inch)	2.917	1.783	1.378
After coating (Epoxy)	(mm)	75.2	44.07	36.27
	(inch)	2.961	1.735	1.428

Magnetic Dimensions

Cross Section (A)	Path Length (ℓ)	Window Area (Wa)	Volume (V)
5.040cm ²	18.38cm	15.25cm ²	92.64cm ³
0.781in ²	7.24in	3,009,310cmil	5.653in ³

OD 74.1mm / 2.917inch

ID 45.3mm
HT 35.0mm



Winding Information

AWG Wire No.	Single Layer Dia(cm)	Single Layer Turn Rdc,Ω	AWG Wire No.	Single Layer Dia(cm)	Single Layer Turn Rdc,Ω
10	0.267		19	0.0980	
11	0.238		20	0.0879	
12	0.213		21	0.0785	
13	0.190		22	0.0701	
14	0.171	N · A	23	0.0632	N · A
15	0.153		24	0.0566	
16	0.137		25	0.0505	
17	0.122		26	0.0452	
18	0.109		27	0.0409	

Single layer winding with 1 inch leads

Available Cores

MPP	Part No.			AL (nH/N ²)	Perm. (μ)
	High Flux	Sendust	Mega Flux®		
CM740026	CH740026	CS740026	CK740026	89	26
CM740060	CH740060	CS740060	CK740060	206	60
-	-	CS740075	CK740075	257	75
-	-	CS740090	CK740090	309	90
CM740125	CH740125	CS740125	-	429	125
-	-	-	-	-	147
-	-	-	-	-	160
-	-	-	-	-	173
-	-	-	-	-	200

AL vs NI Curve (60μ, 125μ)

