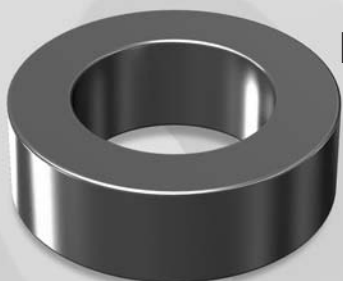


OD610

OD 62.0mm / 2.441inch



**ID 32.6mm
HT 25.0mm**

Core Dimensions

		OD(max)	ID(min)	HT(max)
Before coating	(mm)	62.0	32.6	25.0
	(inch)	2.441	1.283	0.984
After coating (parylene-C)	(mm)	63.1	31.37	26.27
	(inch)	2.484	1.235	1.034

Magnetic Dimensions

Cross Section (A)	Path Length (ℓ)	Window Area (Wa)	Volume (V)
3.675cm ²	14.37cm	7.73cm ²	52.81cm ³
0.570in ²	5.66in	1,525,610cmil	3.223in ³

Available Cores

MPP	Part No.			AL (nH/N ²)	Perm. (μ)
	High Flux	Sendust	Mega Flux®		
CM610026	CH610026	CS610026	CK610026	83	26
CM610060	CH610060	CS610060	CK610060	192	60
-	-	CS610075	CK610075	240	75
-	-	CS610090	CK610090	288	90
CM610125	CH610125	CS610125	-	400	125
-	-	-	-	-	147
-	-	-	-	-	160
-	-	-	-	-	173
-	-	-	-	-	200

Winding Information

AWG Wire No.	Single Layer Turn Rdc, Ω	AWG Wire No.	Single Layer Turn Rdc, Ω
10 0.267		19 0.0980	
11 0.238		20 0.0879	
12 0.213		21 0.0785	
13 0.190		22 0.0701	
14 0.171	N · A	23 0.0632	N · A
15 0.153		24 0.0566	
16 0.137		25 0.0505	
17 0.122		26 0.0452	
18 0.109		27 0.0409	

Single layer winding with 1 inch leads

■ AL vs NI Curve (60μ, 125μ)

