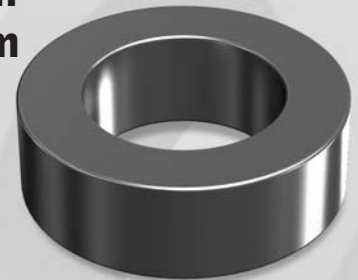


# OD358

OD 35.81mm / 1.410inch

ID 22.35mm  
HT 10.46mm



## Core Dimensions

|                       |        | OD(max) | ID(min) | HT(max) |
|-----------------------|--------|---------|---------|---------|
| Before coating        | (mm)   | 35.81   | 22.35   | 10.46   |
|                       | (inch) | 1.410   | 0.880   | 0.412   |
| After coating (Epoxy) | (mm)   | 36.70   | 21.50   | 11.28   |
|                       | (inch) | 1.445   | 0.848   | 0.444   |

## Magnetic Dimensions

| Cross Section (A)     | Path Length (l) | Window Area (Wa)    | Volume (V)            |
|-----------------------|-----------------|---------------------|-----------------------|
| 0.678cm <sup>2</sup>  | 8.98cm          | 3.64cm <sup>2</sup> | 6.0884cm <sup>3</sup> |
| 0.1051in <sup>2</sup> | 3.54in          | 719,100cmil         | 0.3721in <sup>3</sup> |

## Winding Information

| AWG Wire No. | Single Layer Dia(cm) | Turn | Rdc,Ω   | AWG Wire No. | Single Layer Dia(cm) | Turn | Rdc,Ω |
|--------------|----------------------|------|---------|--------------|----------------------|------|-------|
| 12           | 0.213                | 25   | 0.00579 | 21           | 0.0785               | 74   | 0.117 |
| 13           | 0.190                | 29   | 0.00809 | 22           | 0.0701               | 82   | 0.166 |
| 14           | 0.171                | 32   | 0.0112  | 23           | 0.0632               | 92   | 0.229 |
| 15           | 0.153                | 37   | 0.0157  | 24           | 0.0566               | 103  | 0.322 |
| 16           | 0.137                | 41   | 0.0220  | 25           | 0.0505               | 115  | 0.452 |
| 17           | 0.122                | 46   | 0.0306  | 26           | 0.0452               | 129  | 0.637 |
| 18           | 0.109                | 52   | 0.0429  | 27           | 0.0409               | 143  | 0.885 |
| 19           | 0.0980               | 58   | 0.0600  | 28           | 0.0366               | 160  | 1.25  |
| 20           | 0.0879               | 65   | 0.0837  | 29           | 0.0330               | 177  | 1.71  |

Single layer winding with 1 inch leads

## Available Cores

| MPP      | Part No.  |          |            | AL (nH/N <sup>2</sup> ) | Perm. (μ) |
|----------|-----------|----------|------------|-------------------------|-----------|
|          | High Flux | Sendust  | Mega Flux® |                         |           |
| CM358026 | CH358026  | CS358026 | CK358026   | 24                      | 26        |
| CM358060 | CH358060  | CS358060 | CK358060   | 56                      | 60        |
| -        | -         | CS358075 | CK358075   | 70                      | 75        |
| -        | -         | CS358090 | CK358090   | 84                      | 90        |
| CM358125 | CH358125  | CS358125 | -          | 117                     | 125       |
| CM358147 | CH358147  | -        | -          | 138                     | 147       |
| CM358160 | CH358160  | -        | -          | 150                     | 160       |
| CM358173 | -         | -        | -          | 162                     | 173       |
| -        | -         | -        | -          | 187                     | 200       |

## AL vs NI Curve (60μ, 125μ)

