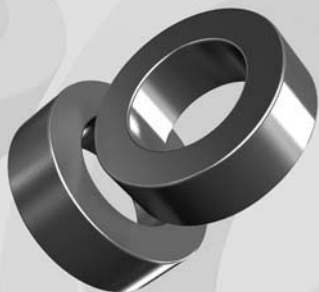


# OD 102

OD 10.16mm / 0.400inch



ID 5.08mm  
HT 3.96mm

## Core Dimensions

		OD(max)	ID(min)	HT(max)
Before coating	(mm)	10.16	5.08	3.96
	(inch)	0.400	0.200	0.156
After coating (parylene-C)	(mm)	10.80	4.57	4.57
	(inch)	0.425	0.180	0.180

## Magnetic Dimensions

Cross Section (A)	Path Length (ℓ)	Window Area (Wa)	Volume (V)
0.1000cm <sup>2</sup>	2.38cm	0.164cm <sup>2</sup>	0.2380cm <sup>3</sup>
0.01550in <sup>2</sup>	0.906in	32,400cmil	0.0140in <sup>3</sup>

## Available Cores

MPP	Part No.			AL (nH/N <sup>2</sup> )	Perm. (μ)
	High Flux	Sendust	Mega Flux®		
CM102026	CH102026	-	-	14	26
CM102060	CH102060	CS102060	CK102060	32	60
-	-	CS102075	CK102075	40	75
-	-	CS102090	CK102090	48	90
CM102125	CH102125	CS102125	-	66	125
CM102147	CH102147	-	-	78	147
CM102160	CH102160	-	-	84	160
CM102173	-	-	-	92	173
CM102200	-	-	-	105	200

## Winding Information

AWG Wire No.	Single Layer Turn	AWG Wire No.	Single Layer Turn
18	9	27	28
19	10	28	32
20	12	29	35
21	13	30	40
22	15	31	44
23	17	32	49
24	20	33	55
25	22	34	62
26	25	35	70

Single layer winding with 1 inch leads

## AL vs NI Curve (60μ, 125μ)

