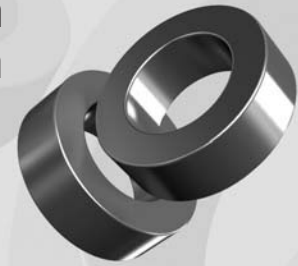


OD097

OD 9.65mm / 0.380inch

**ID 4.78mm
HT 3.96mm**



Core Dimensions

		OD(max)	ID(min)	HT(max)
Before coating	(mm)	9.65	4.78	3.96
	(inch)	0.380	0.188	0.156
After coating (Epoxy)	(mm)	10.29	4.27	4.57
	(inch)	0.405	0.168	0.180

Magnetic Dimensions

Cross Section (A)	Path Length (ℓ)	Window Area (Wa)	Volume (V)
0.0945cm ²	2.18cm	0.1429cm ²	0.2060cm ³
0.01465in ²	0.859in	28,200cmil	0.01258in ³

Winding Information

AWG Wire No.	Single Layer Dia(cm)	Turn	Rdc,Ω	AWG Wire No.	Single Layer Dia(cm)	Turn	Rdc,Ω
19	0.0980	9	0.00567	28	0.0366	29	0.110
20	0.0879	11	0.00783	29	0.0330	33	0.150
21	0.0785	12	0.0109	30	0.0294	37	0.212
22	0.0701	14	0.0152	31	0.0267	41	0.293
23	0.0632	16	0.0209	32	0.0241	46	0.397
24	0.0566	18	0.0291	33	0.0216	51	0.558
25	0.0505	21	0.0405	34	0.0191	58	0.795
26	0.0452	23	0.0567	35	0.0170	65	1.12
27	0.0409	26	0.0782	36	0.0152	73	1.55

Single layer winding with 1 inch leads

Available Cores

MPP	Part No.			AL (nH/N ²)	Perm. (μ)
	High Flux	Sendust	Mega Flux®		
CM097026	CH097026	-	-	14	26
CM097060	CH097060	CS097060	CK097060	32	60
-	-	CS097075	CK097075	40	75
-	-	CS097090	CK097090	48	90
CM097125	CH097125	CS097125	-	66	125
CM097147	CH097147	-	-	78	147
CM097160	CH097160	-	-	84	160
CM097173	-	-	-	92	173
CM097200	-	-	-	105	200

AL vs NI Curve (60μ, 125μ)

