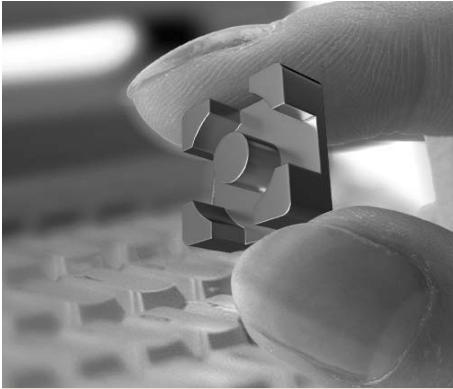


ER CORE

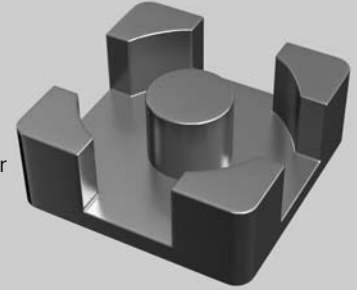


Features

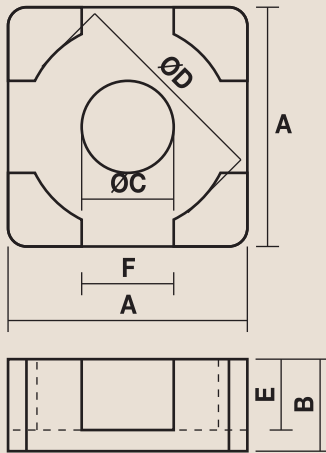
- Small dimensions for large current
- No magnetic flux leakage
- Excellent DC bias characteristics
- Good temperature stability
- Large energy storage capacity

Applications

- Small dimension DC/DC converter
- Large current choke coil
- Smoothing choke coil
- CPU cores for lap-top computer



■ Product Identification



RH 12 44 SC

Shape Number	
Height : 4.4mm	
Length : 12mm	Available size from CSC 8mm~15mm
High Flux ER core	RK : Mega Flux®

Part No.	Dimensions (mm)						Path Length (cm)	Cross Section Area (cm ²)	Al. value (nH/N ²)
	A	B	C	D	E	F			
RH0721SC	7.6	2.1	2.88	6.5	1.15	2.82	1.39	0.117	37.1
RH0725SC	7.6	2.5	2.88	6.5	1.55	2.82	1.55	0.117	33.3
RH1028SC	10.1	2.8	3.85	8.65	1.75	3.76	1.73	0.206	52.3
RH1034SC	10.1	3.4	3.85	8.65	2.35	3.76	1.97	0.206	45.9
RH1237SC	12.7	3.7	4.85	10.8	2.45	4.7	2.19	0.329	66.1
RH1244SC	12.7	4.4	4.85	10.8	3.15	4.7	2.47	0.329	58.6
RH1539SC	15.2	3.9	5.76	12.96	2.35	5.64	2.45	0.468	83.9
RH1549SC	15.2	4.9	5.76	12.96	3.35	5.64	2.85	0.468	72.1

※ RK(Mega Flux® RK core) and customer specifications are also available.