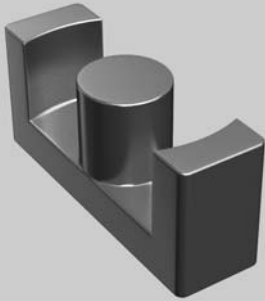


EER CORE

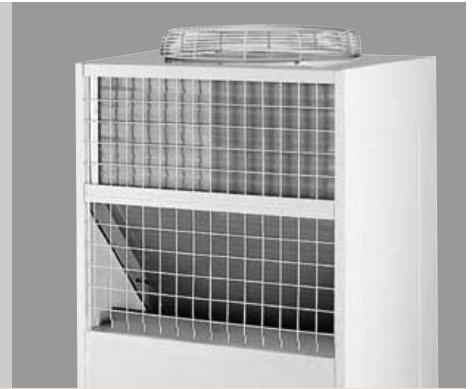


Features

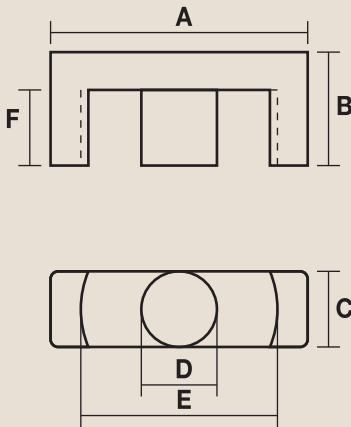
- Large energy storage capacity
- No magnetic flux leakage
- Good temperature stability
- Excellent DC bias characteristics

Applications

- Power inductor for large current
- Multiple circuit choke coil
- Output chokes for SMPS



Product Identification



HER 40 13 B-060

Permeability : 60μ	Available Perm : 26,40,60 μ
Height of EER core	
Width : 13mm	Available size : 7mm~17mm
Length : 40mm	Available size : 25mm~49mm
High Flux EER Core	KER : Mega Flux [®] , SER : Sendust

Part No.	Dimensions (mm)						Path Length (cm)	Cross Section Area(cm ²)	AL value (nH/N ²)		
	A	B	C	D	E	F			026 μ	040 μ	060 μ
HER 2507A	25.5	9.3	7.5	7.5	19.8	6.2	5.10	0.450	39	53	73
HER 2507B	25.5	11.0	7.5	7.5	19.8	7.9	5.78	0.450	34	47	65
HER 3010A	30.6	15.8	9.8	9.8	22.0	11	8.66	0.754	38	53	72
HER 3511A	35.0	15.8	11.3	11.3	25.6	9.8	8.30	1.078	57	78	108
HER 3511B	35.0	20.7	11.3	11.3	25.6	14.7	10.27	1.078	46	63	87
HER 4013A	40.0	17.4	13.3	13.3	29.0	10.4	9.13	1.491	72	99	135
HER 4013B	40.0	22.4	13.3	13.3	29.0	15.4	11.13	1.491	59	81	111
HER 4215A	42.0	22.4	15.5	15.5	29.4	15.4	10.64	2.026	84	115	158
HER 4215B	42.0	25.4	15.5	15.5	29.4	18.4	11.84	2.026	75	103	142
HER 4917A	49.0	18.8	17.2	17.2	36.5	12.2	9.57	2.353	99	136	185
HER 4917B	49.0	24.7	17.2	17.2	36.5	18.1	11.93	2.353	79	109	149

※ KER(Mega Flux[®] EER Core), SER(Sendust EER Core)and customer specifications are also available.