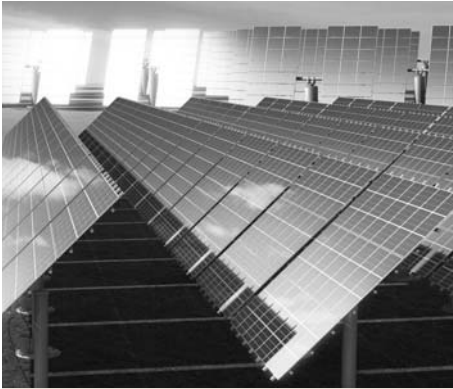


# CYLINDER CORE



## Features

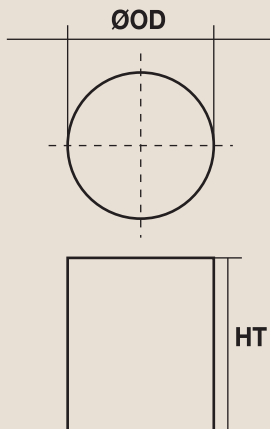
- Large energy storage capacity
- Low core loss at high frequency

## Applications

- Power inductor for large current
- Buck/Boost inductor for inverter



## Product Identification



**CK 30 30**

HT : 30mm

OD : 30mm

Available size from CSC  
24mm ~ 60mm

Mega Flux® Cylinder Core

CS : Sendust, CH : High Flux

Part No.	Dimensions (mm)		Path Length (cm)	Cross Section Area(cm <sup>2</sup> )
	OD(mm)	HT(mm)		
CK2424	24.0	24.0		4.50
CK2525	25.0	25.0		4.91
CK2825	27.6	25.0		6.00
CK2830	27.6	30.0		6.00
CK3026	30.0	26.0		7.07
CK3030	30.0	30.0		7.07
CK3035	30.0	34.7		7.07
CK6030	60.0	30.0		28.27

※ CS(Sendust Core), CH(High Flux core) and customer specifications are also available.